



Rental Tools

**ALQUILER DE EQUIPOS PARA
LA INDUSTRIA DEL OIL & GAS**



Índice

| | | | |
|---------------------------------|----|----------------------|----|
| <i>Nuestra empresa</i> | 3 | <i>Otros equipos</i> | 21 |
| <i>Nuestros servicios</i> | 4 | | |
| <i>Equipamiento</i> | 5 | | |
| <i>Carreteles</i> | 6 | | |
| <i>Esparragadas</i> | 8 | | |
| <i>Bridas ciegas</i> | 9 | | |
| <i>Bridas a conexiones WECO</i> | 10 | | |
| <i>Crossover</i> | 12 | | |
| <i>Válvulas</i> | 13 | | |
| <i>Piletas</i> | 14 | | |
| <i>Líneas</i> | 15 | | |
| <i>Tee y codos</i> | 16 | | |
| <i>Cubos</i> | 17 | | |
| <i>Choke Manifold</i> | 18 | | |
| <i>Actuadores</i> | 19 | | |
| <i>Risers</i> | 20 | | |



G&M RENTAL TOOLS

Nuestra Empresa

Somos una empresa dedicada al alquiler de equipos para la industria de OIL & GAS.

Nos sustentamos en los valores fundamentales:

SEGURIDAD
RESPONSABILIDAD
COMPROMISO
SERIEDAD
RESPETO

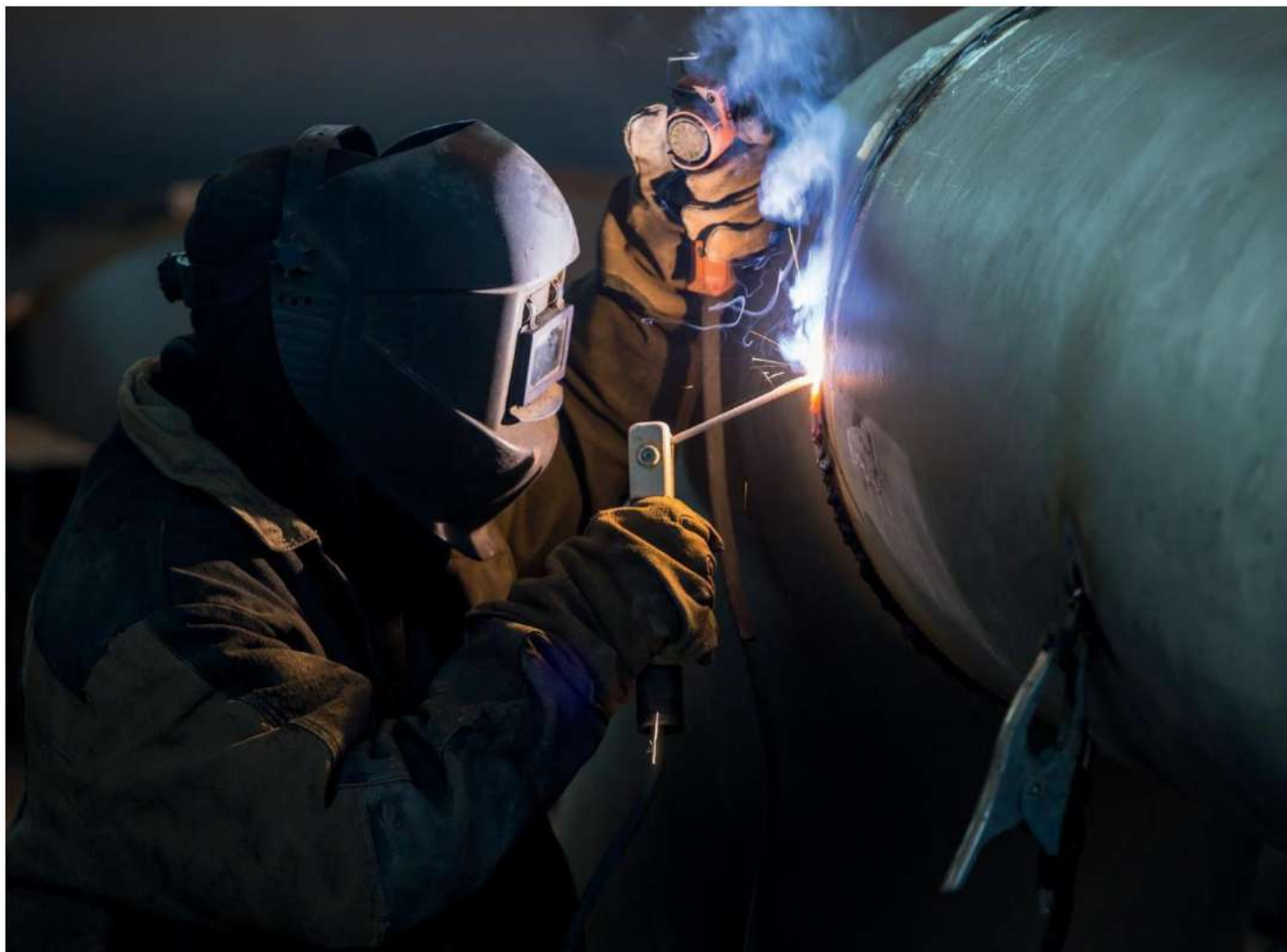


Nuestros Servicios

ALQUILER DE EQUIPOS Y HERRAMIENTAS

REPARACIÓN Y MANTENIMIENTO

SOLDADURA EN GENERAL



Equipamiento

Contamos con gran variedad de equipos y herramienta para la actividad petrolera y de gas.

Proveemos la solución para la necesidad de nuestros clientes con celeridad y eficiencia.

OFRECEMOS:

Carreteles

Esparragadas

Bridas

Crossovers

Válvulas

Piletas

Líneas

Cubos

Risers

Entre otros equipos



| Medida | PSI | Longitud |
|----------------------|-------------|----------|
| 11" x 7 1/16" | 10000/10000 | 600 mm |
| 7 1/16" x 5 1/8" | 5000/5000 | 400 mm |
| 7 1/16" x 5 1/8" | 10000/10000 | 400 mm |
| 7 1/16" x 5 1/8" | 10000/15000 | 400 mm |
| 7 1/16" x 7 1/16" | 10000/5000 | 400 mm |
| 7 1/16" x 7 1/16" | 5000/5000 | 400 mm |
| 7 1/16" x 7 1/16" | 5000/3000 | 400 mm |
| 7 1/16" x 4 1/16" | 10000/10000 | 400 mm |
| 5 1/8" x 5 1/8" | 15000/10000 | 400 mm |
| 5 1/8" x 5 1/8" | 15000/15000 | 400 mm |
| 5 1/8" x 2 9/16" | 10000/10000 | 260 mm |
| 5 1/8" x 4 1/16" | 5000/10000 | 300 mm |
| 7 1/16" (Espaciador) | 15000 | 500 mm |
| 7 1/16" (Espaciador) | 10000 | 500 mm |



| Medida | PSI | Longitud |
|-------------------|-------------|----------|
| 13 5/8" x 13 5/8" | 5000/3000 | 600 mm |
| 13 5/8" x 11" | 5000/5000 | 600 mm |
| 13 5/8" x 13 5/8" | 10000/5000 | 600 mm |
| 11" x 11" | 5000/3000 | 600 mm |
| 11" x 11" | 10000/5000 | 600 mm |
| 7 1/16" x 7 1/16" | 10000/5000 | 400 mm |
| 7 1/16" x 5 1/8" | 15000/15000 | 500 mm |
| 7 1/16" x 7 1/6" | 15000/15000 | 1500 mm |
| 7 1/16" x 7 1/16" | 15000/10000 | 500 mm |
| 5 1/8" x 4 1/16" | 15000/15000 | 400 mm |
| 5 1/8" x 3 1/16" | 15000/15000 | 400 mm |
| 4 1/16" x 4 1/16" | 15000/10000 | 400 mm |
| 4 1/16" x 4 1/16" | 10000/5000 | 300 mm |
| 4 1/16" x 3 1/16" | 15000/10000 | 300 mm |
| 4 1/16" x 3 1/16" | 10000/10000 | 300 mm |
| 4 1/16" x 3 1/8" | 10000/5000 | 400 mm |
| 3 1/16" x 3 1/16" | 15000/10000 | 400 mm |
| 3 1/16" x 4 1/16" | 10000/10000 | 300 mm |
| 3 1/8" x 4 1/16" | 5000/5000 | 350 mm |
| 3 1/16" x 3 1/16" | 10000/10000 | 300 mm |
| 2 9/16" x 3 1/16" | 10000/10000 | 300 mm |
| 2 9/16" x 2 1/6" | 10000/15000 | 250 mm |
| 2 9/16" x 2 9/16" | 10000/5000 | 250 mm |



Esparragadas

| Medida | PSI | Longitud |
|-------------------|-------------|----------|
| 13 5/8" x 11" | 15000/15000 | 250 mm |
| 11" x 11" | 5000/3000 | 200 mm |
| 11" x 11" | 10000/5000 | 250 mm |
| 7 1/16" x 7 1/16" | 15000/10000 | 200 mm |
| 7 1/16" x 7 1/16" | 10000/5000 | 200 mm |
| 7 1/16" x 7 1/16" | 15000/15000 | 200 mm |
| 7 1/16" x 7 1/16" | 15000/10000 | 150 mm |
| 7 1/16" x 7 1/16" | 10000/5000 | 150 mm |
| 7 1/16" x 7 1/16" | 15000/10000 | 130 mm |
| 7 1/16" x 5 1/8" | 15000/15000 | 150 mm |
| 5 1/8" x 5 1/8" | 15000/10000 | 150 mm |
| 5 1/8" x 4 1/16" | 15000/10000 | 150 mm |
| 5 1/8" x 5 1/8" | 10000/5000 | 150 mm |
| 5 1/8" x 5 1/8" | 15000/10000 | 200 mm |
| 4 1/16" x 4 1/16" | 10000/5000 | 120 mm |
| 4 1/16" x 4 1/16" | 15000/10000 | 200 mm |
| 4 1/16" x 4 1/16" | 15000/10000 | 130 mm |
| 4 1/16" x 3 1/16" | 10000/10000 | 230 mm |
| 3 1/16" x 3 1/16" | 15000/10000 | 200 mm |
| 3 1/16" x 3 1/16" | 15000/10000 | 130 mm |
| 3 1/16" x 3 1/8" | 10000/5000 | 130 mm |
| 3 1/8" x 2 9/16" | 5000/10000 | 130 mm |
| 3 1/16" x 2 9/16" | 10000/5000 | 100 mm |



Medida

PSI

| | |
|------------------|-------|
| 7 1/16" API | 15000 |
| 9/16" Auto/clave | 15000 |
| 5 1/8" | 15000 |
| 5 1/8" | 15000 |
| 4 1/16" | 10000 |
| 3 1/16" | 15000 |
| 3 1/16" | 15000 |
| 3 1/16" | 10000 |



| Medida | PSI | Tipo |
|--|-------------|--------|
| 4 1/16" x 3" | 15000/1502 | MACHO |
| 4 1/16" x 3" | 15000/1502 | MACHO |
| 4 1/16" x 3" | 15000/1502 | HEMBRA |
| 4 1/16" x 3" | 10000/1502 | HEMBRA |
| 4 1/16" x 3" | 10000/1502 | MACHO |
| 3 1/16" x 3" | 15000/10000 | HEMBRA |
| 3 1/16" x 3" | 15000/1502 | HEMBRA |
| 3 1/16" x 3" | 15000/1502 | MACHO |
| 3 1/16" x 3" | 10000/1502 | MACHO |
| 3 1/16" x 3" | 10000/1502 | HEMBRA |
| 3 1/16" x 3" | 10000/1502 | MACHO |
| 3 1/16" x 2" | 10000/1502 | MACHO |
| 3 1/16" x 3 1/2" | 10000/1502 | HEMBRA |
| 3 1/16" x 3" c/tapón autoclave 9/16" | 10000/1502 | HEMBRA |
| 2 1/16" x 2" | 15000/1502 | MACHO |



| Medida | PSI | Tipo |
|------------------|------------|--------|
| 2 1/16" x 2" | 15000/1502 | MACHO |
| 2 1/16" x 2" | 10000/1502 | MACHO |
| 2 1/16" x 2" | 15000/1502 | HEMBRA |
| 2 1/16" x 2" | 10000/1502 | HEMBRA |
| 2 1/16" x 2" | 10000/1502 | MACHO |
| 2 1/16" x 2" | 5000/1502 | MACHO |
| 2 1/16" x 2" | 10000/NPT | MACHO |
| 2 9/16" x 3" | 10000/1502 | MACHO |
| 2 9/16" x 2" | 10000/1502 | HEMBRA |
| 2 9/16" x 2" | 10000/1502 | MACHO |
| 2 9/16" x 3" | 10000/1502 | MACHO |
| 2 9/16" x 2 7/8" | 10000/1502 | HEMBRA |



Nombre y Medida

3" fig.1502 **Macho** x 2" **Hembra**
 3" fig.1502 **Macho** x 2" **Hembra**
 3" fig.1502 **Macho** x 2" **Hembra**
 3" fig.1502 **Macho** x 2" **Hembra**
 3" fig.1502 **Macho** x 2" **Hembra**
 3" 15k fig.1502 **Hembra** x 2" 15k **Hembra**
 3" 15k fig.1502 **Hembra** x 2" 15k **Hembra**
 3" 15k fig.1502 **Hembra** x 2" 15k **Hembra**
 3" 15k fig.1502 **Macho** x 3" **Macho**. 20 cm
 3" 15k fig.1502 **Macho** x 3" **Macho**. 44 cm
 2 7/8" EUE **Macho** x 2" fig.1502 **Hembra**
 3" 15k **Hembra** x 2" fig.1502 **Hembra**
 3" 15k **Hembra** x 2" fig.1502 **Macho**
 3" fig.1502 15k **Macho** x 3" **Macho**
 3" fig.1502 **Macho** x 2" **Hembra**
 3" fig.1502 **Macho** x 2" **Hembra**
 3" fig.1502 **Hembra** x 3 1/2" EUE **Macho**
 3" fig.1502 **Hembra** x 3" **Hembra**
 3" fig.1502 **Macho** x 2" **Hembra**
 3" fig.1502 **Macho** x 2" **Macho**
 2" fig. 1502 **Hembra** x 2" **Hembra**
 2" fig. 1502 **Hembra** x 3" **Macho**
 3" fig.1502 **Hembra** x 3" **Hembra**
 2" fig.1502 **Macho** x 2" **Macho**
 3" fig.1502 **Macho** x 3" **Macho**
 3" fig.1502 **Macho** x 2" **Hembra**
 3" fig.1502 **Hembra** x 2" **Hembra**
 2" fig.1502 6000k **Macho** x 2" **Hembra**
 2" 6000 psi **Macho** x 2" fig.1502 psi **Hembra**
 2" fig.1502 **Hembra** x 2" **Hembra**
 2" fig.1502 **Macho** x 2" **Macho**
 3" fig.1502 **Hembra** x 2" **Hembra**



Nombre y Medida

Válvula tapón 2" 10k. **Macho-Hembra 1502**

Válvula tapón 2" 15k. **Macho-Hembra 1502**

Válvula tapón 3" 15k. **(Operativas)**

Válvula 3" Fig.1502 10k H2S. **Macho-Hembra**

Válvula Esclusa 2 1/16" **FLS 10k H2S Cameron**



Nombre y Medida

Pileta desfogue **P4015** Gov. 30 M3

Pileta desfogue **P4014** Gov. 30 M3

Pileta de acumulación **70 M2 P4012**

Pileta desfogue **6 M2** con espumígeno y golpeador



Nombre y Medida

- 2" 15000 psi fig.1502 sae 4140. Macho-Hembra, 4 ft
2" 15000 psi fig.1502 sae 4140. Macho-Hembra, 6 ft
2" 15000 psi fig.1502 sae 4140. Macho-Hembra, 8 ft
2" 15000 psi fig.1502 sae 4140. Macho-Hembra, 10 ft
3" 15000 psi fig.1502 sae 4140. Macho-Hembra, 1ft
3" 15000 psi fig.1502 sae 4140. Macho-Hembra, 2ft
3" 15000 psi fig.1502 sae 4140. Macho-Hembra, 3ft
3" 15000 psi fig.1502 sae 4140. Macho-Hembra, 4ft
3" 15000 psi fig.1502 sae 4140. Macho-Hembra, 5ft
3" 15000 psi fig.1502 sae 4140. Macho-Hembra, 6ft
3" 15000 psi fig.1502 sae 4140. Macho-Hembra, 8ft
3" 15000 psi fig.1502 sae 4140. Macho-Hembra, 10ft
Líneas de venteo 3 ½" EUE.



Nombre y Medida

Tee 3" fig.1502 15k. Macho-Hembra-Hembra

Tee 3" fig.1502 Sae 4140. Macho-Hembra-Hembra

Tee 2" fig.1502 Sae 4140. Macho-Hembra-Hembra

Codo Radio Largo 2" Fig.1502. Macho-Hembra

Codo Radio Corto 2" Fig.1502. Macho-Hembra



Nombre y Medida

3 1/16" 10000 psi sae 4140. **5 caras**

3 1/16" 10000 psi sae 4140. **4 caras**

5 1/8" 15000 psi sae 4140. **4 caras**

2 1/16" 10000 psi. **2 caras**



Nombre y Medida

CHOKE MANIFOLD

- 3 1/16" 15000psi PSL-3 para H2S



Nombre y Medida

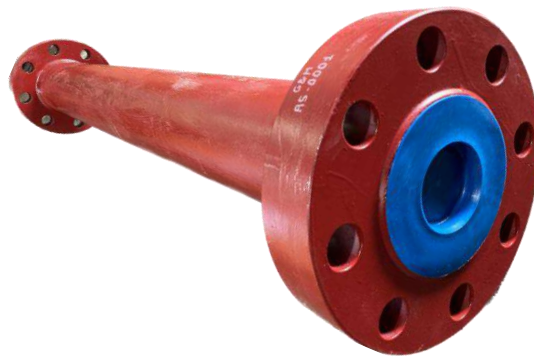
ACTUADORES

- Ac. Hidráulicos para válvulas tapón balanceado



Risers

| Medida | PSI | Longitud |
|---------|-------|----------|
| 5 1/8" | 15000 | 1500mm |
| 4 1/16" | 15000 | 1500mm |
| 3 1/16" | 15000 | 1500mm |
| 3 1/16" | 10000 | 1000mm |



Nombre y Medida

- **Chispero a distancia**
- **Bomba de trasbase**
- **Manguerote 4" de 6 metros**
- **Manguerote 4" de 4 metros**
- **Manguerote ignífugo de 4 1/16" 10k de 6 metros**
- **Manguerote ignífugo de 4 1/16" 10k de 9 metros**
- **Caja Porta Orificios 3 1/16" 10k**
- **Tapón ciego 2" Weco fig.1502**
- **Tapón ciego 3" Weco fig.1502**
- **Bomba diafragma neumática de 2"**
- **Tanque de agua de 10 metros**
- **Bomba a tornillo 4x4 antiexplosiva**



Nombre y Medida

- **Tapón autoclave 2" 1502**
- **Dado de cemento de 1 tonelada**
- **Dado de cemento de 2,5 toneladas**
- **Generador de 60 KVA**
- **Generador de 80 KVA**
- **Generador de 110KVA**
- **Tanque de gasoil**
- **Subestructura (*Plataforma de trabajo*)**
- **Turbocalentador de 55000 Kcal**
- **Turbocalentador de 60000Kcal**
- **Auto Elevador eléctrico de 2.5 toneladas**
- **Trailer company men**



Otros equipos



Contacto

Gustavo Zapata / Gerencia
gustavo@gymrentaltools.com.ar
+54 9 299 469-8415

Patricia Jara / Gerencia
patricia@gymrentaltools.com.ar
+54 9 299 511-5558

Miguel Nambuena / Gerencia
administración@gymrentaltools.com.ar
+54 9 299 6233588

Galarza 3495
Neuquén Capital



Rental Tools S.R.L.



**CENTRO
PYME
ADENEU**